



When Risk Matters!

CAPABILITY STATEMENT

Fibre Reinforced Plastics

Introduction

Eptec is a specialist industrial contractor in Asset Preservation and Rehabilitation. Our expertise is engineered solutions using resin technology to provide concrete rehabilitation, corrosion protection, glass reinforced plastics, waterproofing & linings and thermal insulation.

With offices across Australia, Eptec is positioned to deliver projects in all States and Territories. With a core workforce of over 250 people, Eptec can rapidly mobilise and deploy resources to anywhere in Australia.

The workforce comprises qualified managers and engineers supported by experienced supervisors and permanent employees. One of Eptec's strengths is the use of our own permanent workforce rather than reliance on subcontractors. With skills developed over many years, Eptec guarantees highly responsive, flexible and committed teams ready to undertake projects in even the most remote areas.

Typically Eptec's solutions use the latest resins technology for coatings, cement grouts, epoxy grouts, waterproof membranes, high tech reinforcement such as carbon-fibre and many other innovative and specialised products. Eptec does not manufacture products and can call on the expertise and knowledge bank of all the major worldwide suppliers to assist in providing engineered solutions. We will often participate with manufacturers in the development and application of new products, always with a vision for improving industry techniques and safety and environmental awareness.

Our specialised services are applicable across a broad spectrum of industries including Defence, Water & Wastewater, Infrastructure and Energy & Resources.

Fibre Reinforced Plastics

With extensive experience in Reinforced Composites EPTEC is able to provide FRP Solutions to a large range of Industries require protection and maintenance from the effects of water and liquids, whether from groundwater, rainwater wastewater or process streams.

With the capability to provide assessment and site inspection services, we can determine and advise the most appropriate FRP solution to complex issues and deliver it with the our own specialist workforce.

Our services and capabilities include:

- Asset condition assessment and site survey
- Preparation of Isometric drawings,
- Site installation, testing and Commissioning of FRP Pipes
- FRP Workshop and Site spooling, conductive and nonconductive jointing, selection of materials and application procedures
- Design and construct FRP Platforms & handrails
- Supply and install FRP Gratings
- FRP Lining of underground fuel storage tanks for unleaded and leaded fuel,
- All forms of liquid applied FRP coatings to provide chemical and abrasion resistance.
- Butt & Strap jointing;

Industries and Sectors Serviced:

- Water and Wastewater
- Mining and Process
- Desalination
- Energy
- Marine

Structures and Applications:

- Drinking and Recycled Water Treatment Plants
- Municipal and Industrial Wastewater Treatment Plants
- Sewerage Infrastructure – Relining of Pipelines and Manholes
- Desalination Plants
- Mining, Process and Chemical Plants
- Thermal Power Stations
- Fuel Storages – Tanks
- Cleaning, Inspection, reporting and carry out repairs on Chemical Storage Tanks
- Design and construct – Mast Access Platforms and Handrails for Defence Ships



Technical and Management experience in FRP

Eptec has a team of managers, supervisors and tradespersons with a collective experience of some several hundred man years in FRP achievements throughout Australasia.

The depth of knowledge within the company provides a solid foundation for the provision of technical expertise that has been made available across Australia.

Eptec's staff experience can be summarised as follows:

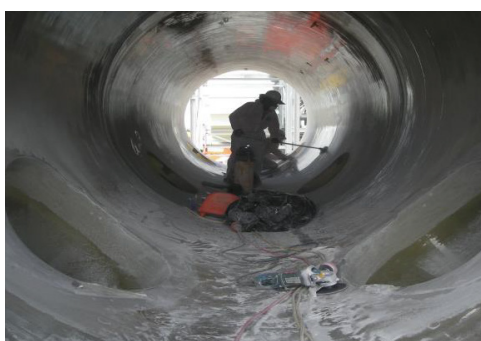
- 40 years' experience in spooling and installation of FRP pipe projects.
- Development of FRP industry in Western Australia, Victoria, and New South Wales from 1980.
- Development and installation of corrosion resistant pipe liners for sewer corrosion protection used on metropolitan regions.
- Power Station cooling water piping installations including Vales Point, Eraring, Mt. Piper, Bayswater, Muja and Morwell as well as numerous Sewerage treatment facility installations throughout Australia and South East Asia.
- Fabrication and site grouting of ocean outfalls for Sydney Water.

This expertise provides the experience and resources to supervise and execute both pipe spooling and on-site installation work.

Supervision

To ensure that all quality and programme objectives are met at every phase of the works EPTEC recognises the need for full-time supervision and planning. In the case of third party supply of FRP products, EPTEC provides full-time supervision of manufacturing processes, and also on-site installation.

The outsourcing of supply to Australian and overseas fabricators, coupled with EPTEC's direct supervision, is a successful strategy for FRP spooling and jointing that has been utilised by EPTEC on many occasions.



Raw Material Suppliers

The sourcing of suppliers with quality track records is done through EPTEC's detailed knowledge of the suppliers. Previous experience and track records are key issues in the selection of quality suppliers.

Quality Management System & Uninstallation

Depending on Client requirements;

- Eptec will shop spool and joint, plus in-situ joint, FRP pipe and fittings
- Eptec will provide technical support services covering the on-site evaluation of modifications and technical feedback on problem solving

Significant Projects

Sydney Desalination Project

Location : Sydney, NSW

Client : John Holland / RPC Technologies

Scope of Works : FRP workshop spooling
100mm dia to 650mm dia pipes. FRP site jointing
works 400mm dia to 1800mm dia pipes.



Woodman Point STP / Odour Control

Location : Gladston, QLD

Client : Queensland Alumina

Scope of Works : Refurbishment of two (2) x
55m diameter tanks.

Port Kembla Copper FRP Piping

Location : Sydney, NSW

Client : ABB Engineering Corporation

Scope of Works : FRP and PVC pipe work & FRP
grating, preparation of isometrics, supervision
of overseas manufacturer, QA & delivery, site
installation & management.

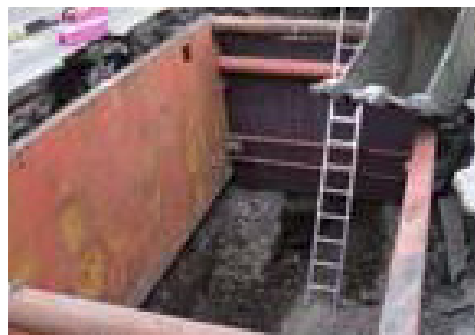


Ultimo Street Carrier Rehabilitation Works

Location : Sydney, NSW

Client : Sydney Water

Scope of Works : Insertion of FRP pipeline to existing Ovi-form sewer.



WMC Olympic Bam (Cusz & Usx)

Location : Sydney, NSW

Client : Western Mining Corporation

Scope of Works : FRP pipe jointing.



USX Mixer Settler / Tank Area FRP Piping Fabrication

Location : Sydney, NSW

Client : Western Mining Corporation

Scope of Works : FRP pipe shop spooling of over 10km.



Ravensthorpe Nickel Project

Location : Ravensthorpe, WA

Client : RPC Technologies

Scope of Works : 650mm dia. FRP seawater supply pipe line shop spooling.

Merrimac Disinfection Chamber

Location : Brisbane, QLD

Client : RPC Technologies

Scope of Works : FRP site shop spooling work with 1650mm dia pipes.



Kogan Creek Power Station

Location : Kogan Creek, QLD

Client : Lifese Engineering Pty Ltd

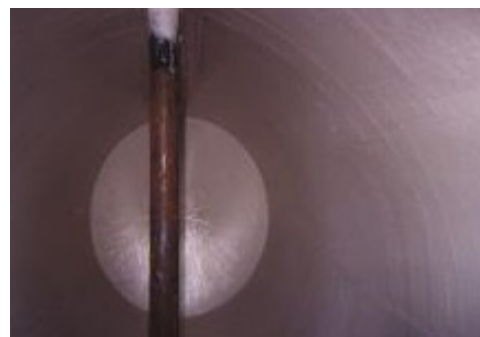
Scope of Works : FRP site jointing works.

FRP Lining of Underground Fuel Storage Tank

Location : NSW

Client : Shell company of Australia

Scope of Works : FRP lining of a number of underground fuel storage tanks (unleaded and leaded fuel) at various locations in NSW.



Anzac Frigate - Mast Access Platform

Location : Williamstown, VIC

Client : Royal Australian Navy

Tenix Defence Systems

Scope of Works : Design, supply & fabrication of FRP mast access platforms.

Sino Iron Project

Location : Cape Preston, Pilbara, WA

Client : CITIC Pacific Mining Management / UGL

Scope of Works : Protective coatings to steel and concrete structures with various coating materials, FRP lamination, site fabrication of spools and repair works, grouting, plastic welding.



FRP Tank Cleaning & Repairs

Location : Sydney, NSW

Client : Sydney Water

Scope of Works : Tank isolation, disposal of chemicals from within the tank, standby tank commissioning and decommissioning, fiberglass tank cleaning, condition assessment, fibreglass repair works inside and outside the tank, non-destructive testing.



Shell Anglesea Tank Lining

Location : Anglesea, VIC

Client : Novotank Pty. Ltd.

Scope of Works : FRP lining of six underground fuel storage tanks.



Contact Details

Head Office

A: 463-467 Harris St,
Ultimo, NSW 2007

T: (02) 9034 6969

F: (02) 9034 6970

E: eptec@eptec.com.au

Eptec Workshop Facility

A: 40-41 Pavesi St,
Guildford, NSW 2161

T: (02) 9681 6499

F: (02) 9681 7659

E: eptec@eptec.com.au

Eptec Western Australia

A: 51 Dooley St,
Navel Base, WA 6165

T: (08) 9410 2010

F: (08) 9410 2021

E: eptecwa@eptec.com.au