

FLINDERS STREET STATION REFURBISHMENT



Client

Connex

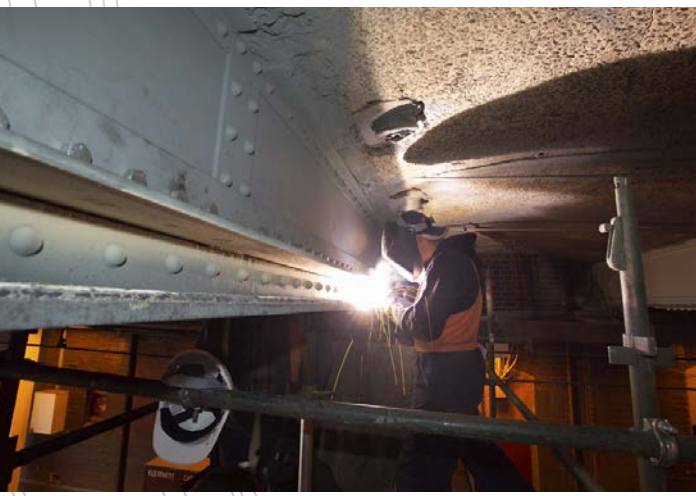
Location

Melbourne, VIC, Australia

Scope

- Steel beam strengthening
- Concrete slab repair
- Carbon fibre installation
- Drainage waterproofing
- Grout injection
- Epoxy injection
- Protective coating

FLINDERS STREET STATION REFURBISHMENT



Project Details

Connex Victoria commissioned Eptec as the principle contractor for the Flinders St Station upgrade.

Built in 1910, the station required upgrades to allow it to cater for the growing demands and numbers of commuters that it would face in the 21st century.

Eptec simultaneously managed works, which included concrete slab reinforcement with carbon fibre to a surface area of 2000 sqm (making it the second largest in Australia), corrosion protection and coatings work, column grout and epoxy injection, waterproofing to drains, concrete repair and steel beam strengthening.

Works were conducted ahead of schedule and delivered to a satisfied client. Much of the work was carried out in a “live” track environment.

Contact Details

Head Office: 463-467 Harris Street, Ultimo, Sydney
Phone: 02 9034 6969 | Fax: 02 9034 6970 | Email: eptec@eptec.com.au | Web: www.eptec.com.au