

WARRAGAMBA DAM STOP LOG GUIDE RAILS REFURBISHMENT



Client

Department of Commerce for the Sydney Catchment Authority

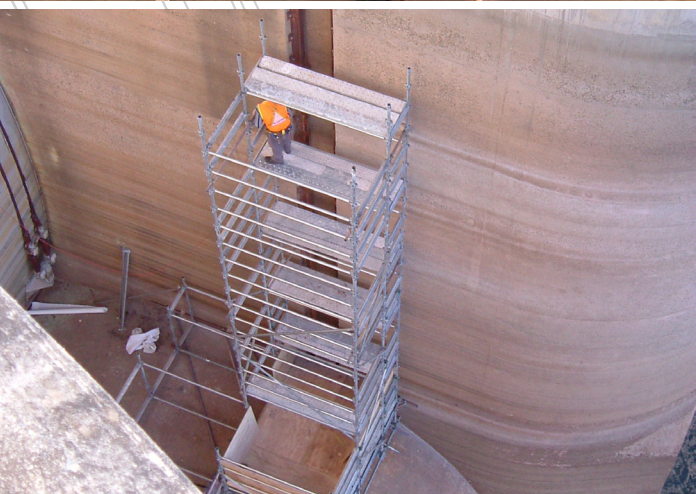
Location

Warragamba Dam, NSW, Australia

Scope

- Design
- Scaffolding
- Demolition
- Rail fabrication
- Lead abatement
- Protective coating
- Site works
- Cathodic protection

WARRAGAMBA DAM STOP LOG GUIDE RAILS REFURBISHMENT



Project Details

Warragamba Dam was commissioned in 1960 and the dam wall extended in 1991. Steel guide rails in the upstream face facilitate the installation of stoplogs allowing maintenance of the four radial gates.

The unprecedented low water levels, exposed the full height of the rails facilitating access to replace or refurbish the heavily corroded rails.

As the primary contractor, Eptec's scope was to remove the existing rails by demolition of grout, fabrication of new rails and cathodic protection. All work was undertaken under an accelerated program in case of increased water levels.

Contact Details

Head Office: 463-467 Harris Street, Ultimo, Sydney
Phone: 02 9034 6969 | Fax: 02 9034 6970 | Email: eptec@eptec.com.au | Web: www.eptec.com.au