

PEATS FERRY BRIDGE



Client

DM Roads

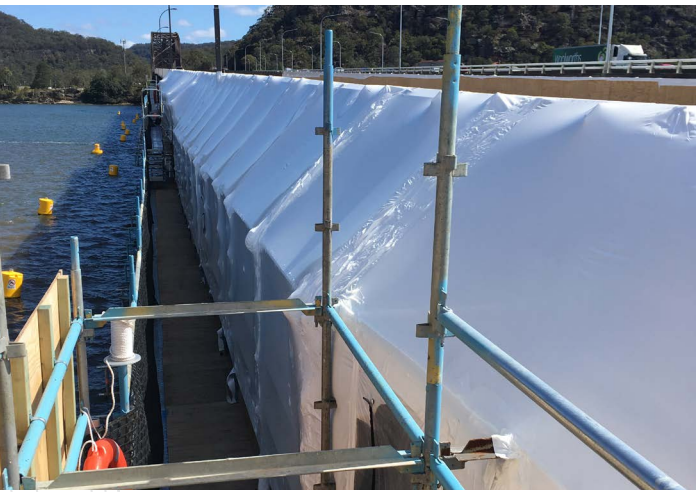
Location

Mooney Mooney, Sydney, Australia

Scope

- Scaffolding and encapsulation of the bridge
- Blast and paint of all steel members- removing the existing lead coatings
- Concrete remediation
- Steel repairs
- Installation of new traffic barrier system

PEATS FERRY BRIDGE



Project Details

The Peats Ferry Bridge was completed in 1945 and up until the construction of the parallel Brooklyn Bridge in 1973, formed part of the main road route between Sydney and Brisbane. As the only alternative route across the Hawkesbury River, the bridge was identified for a major upgrade.

Eptec was awarded the order for the Peats Ferry Bridge in August 2017, and site mobilisation commenced 29th August 2017.

To date, the works completed on site are:

- Site Establishment – Offices, amenities and equipment
- Scaffolding and encapsulation (Spans 13-19)
- Blast and prime of spans 13-18

A number of innovations have been employed on the project, with the main element being the design & installation of the access system for the works, without imposing load on the existing deck structures.

Contact Details

Head Office: 463-467 Harris Street, Ultimo, Sydney
Phone: 02 9034 6969 | Fax: 02 9034 6970 | Email: eptec@eptec.com.au | Web: www.eptec.com.au