



**EPTEC**

Asset Preservation  
& Rehabilitation

*When Risk Matters!*

# CORPORATE OVERVIEW



## WHAT WE DO

Eptec Group has two operating sections: Marine & Services.

Eptec Marine is the leading Marine Preservation Contractor across Australia. With a presence in all major shipyards, Eptec has worked on almost all of the Australian Navy fleet, ships from the US Navy and NZ Navy and many commercial vessels.

Eptec Services is a specialist in Asset Preservation and Rehabilitation concentrating on larger infrastructure assets across a range of industries. Our services are based on the application of our core expertise in resin technology to solve complex problems.

Eptec is third party certified by BVQI for Quality, Health & Safety, Environment and Social Responsibility. Furthermore Eptec is PCCP certified with CSIRO up to level 6 which ensures we are equipped for the removal of hazardous coatings.

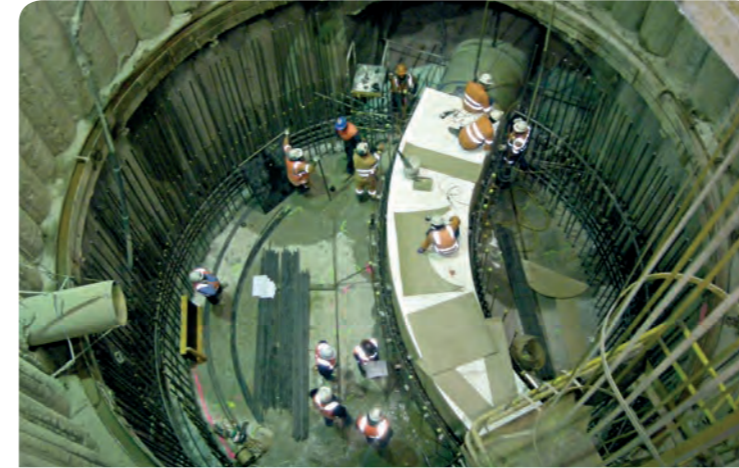
## WHO WE DO IT FOR

Eptec operates across a range of industry sectors:

- Buildings & Facilities
- Energy & Resources
- Naval Defence & Marine
- Transport & Infrastructure
- Water & Wastewater

## OUR APPROACH TO SAFETY

Paramount in all we do is the safety of our people, clients and the community. We understand that safe projects are successful projects and by managing risk at every level, we aim to keep everyone safe, everyday.



## Corrosion Protection

Typically on steel and concrete assets, our corrosion protection services include:

- Abrasive Blasting, Wet or Dry
- Ultra High Pressure Water Blasting
- Removal of Hazardous Coatings
- Application of Specialised Coatings
- Passive Fire Protection

Typical applications are ships, desalination plants, sewer treatment plants, dams, mines, bridges, wharves & jetties, storage tanks, windfarms, refineries and oil & gas platforms.

## Concrete Rehabilitation

Applicable to both new and existing structures, concrete rehabilitation services include:

- Spall repairs
- Coatings
- Structural liners
- Chemical grouting/injection
- Cementitious grouting/injection
- Carbon fibre strengthening

Typical applications are desalination plants, sewer treatment plants, dams, sewerage systems, mines, defence facilities, bridges, power stations and transport hubs.

## Linings & Waterproofing

Applicable to a broad range of assets. Services include:

- Sheet waterproofing membranes
- Liquid waterproofing membranes
- Powder waterproofing membranes
- Injection (crack injection, soil stabilisation)
- Flat sheet liners
- Torch on membranes

Typical applications are tunnels, sewer treatment plants, desalination plants, dams, sewerage systems, roads, storage tanks and processing plants.

## Fibre Reinforced Plastics

Eptec shop spoos, site installs and repairs GRP/GRE piping. The services include:

- Field laminating (tanks, pipes)
- Structural strengthening
- Composite Structures

Typical Applications are desalination plants, process plants, wind farms, mines, jetties, refineries, power stations, oil and gas platforms and naval bases.

## Insulation & Lagging

Applicable to a broad range of assets. Services include:

- Structural Insulation:
  - Polyamide panels
  - Mineral wool panels
  - Polyester blankets
  - Navy board panels
  - Foil sheeting blanket

HVAC ducting insulation:

- Rockwool blanket or Moulded section
- Mineral wool blankets

- Pipe Insulation and lagging:
  - Armaflex insulation formed and flat sheet
  - Mineral wool formed and flat sheet
  - Rockwool formed and flat sheet

Typical applications are naval vessels, storage tanks, chemical pipelines, boilers and power stations.





## History

Eptec was founded in 1997 in Sydney with a team of experienced staff who had already developed decades of experience on major infrastructure and defence projects in the niche markets of corrosion protection, concrete remediation, waterproofing and fibre glass with one of Australia's leading construction companies.

In 1998, Eptec won the preservation, insulation, lagging and cleaning contract for the new build Anzac frigate fleet in Williamstown, Victoria. This became an 8 year contract and positioned Eptec as the leader in the specialised corrosion protection of naval vessels in Australia.

In addition to the naval work, Eptec diversified into infrastructure services. The first significant success was in 1999 when Eptec approached Transfield, the constructors of the City Link Domain and Burnley tunnels in Melbourne with a proposal to fix the waterproofing problems. Eptec successfully brought the problem under control and established itself as a credible specialist contractor in the infrastructure waterproofing industry.

Today, Eptec has become an established presence across a range of industry sectors which include Buildings & Facilities, Energy & Resources, Naval Defence & Marine, Transport & Infrastructure and Water & Wastewater.



## Capabilities

### Specialist Engineering Contractor

Typically Eptec operates as a contractor to either the Asset owner or Prime Construction Contractor. Our contracting capabilities noted below ensure Eptec is well positioned to support the delivery of projects and minimise risk

### Project Management

Project management is at the centre of everything Eptec delivers. Every contract is assigned to a Project Engineer to ensure schedule/cost is tightly controlled. On larger projects, Project Offices are established with staffing to provide Project Management, HSE Management and Site Administration.

### Multi-Skilled Workforce

As a result of employing its own permanent workforce, Eptec is able to multi-skill employees in the full range of activities it provides. This greatly improves both the efficiency and effectiveness of Eptec teams on large construction sites.

### Flexible & Rapid Deployment

Eptec has built a reputation over many years for

its ability to rapidly mobilise and deploy significant resources to often remote locations without relying on Labour Hire or Subcontracting companies.

### Independent Engineering Function

Eptec is independent of any material or product suppliers and employs its own Senior Engineers with many years of experience in the industry. This in-house capability ensures Eptec is able to enhance or suggest alternative solutions to more complex problems.

### Contract Discipline

Our experience and in-house contract management capability guarantees a professional contracting discipline and an ability to manage the demands and risks associated with large and complex contracting arrangements.

### Accreditations

Eptec is fully accredited for its Safety, Quality and Environmental Management System. The Eptec Management System supports everything that we do and guarantees a consistency of delivery on every project. Eptec also holds many specialist industry accreditations and certifications.



## Contact

### Eptec Group

P.O. Box 4067  
Macquarie Centre NSW 2113, Australia

### Head Office:

Level 2, 68 Waterloo Road  
Macquarie Park NSW 2113, Australia

t: +61 2 9034 6969

e: [eptec@eptec.com.au](mailto:eptec@eptec.com.au)

[www.eptec.com.au](http://www.eptec.com.au)

